



GPS CO-ORDINATES:
18° 27' 47.37" E 33° 59' 9.70" S



Tony Bredenkamp 083 602 6113
Mark Upton 082 890 2888
021 683 0008 www.upton.co.za

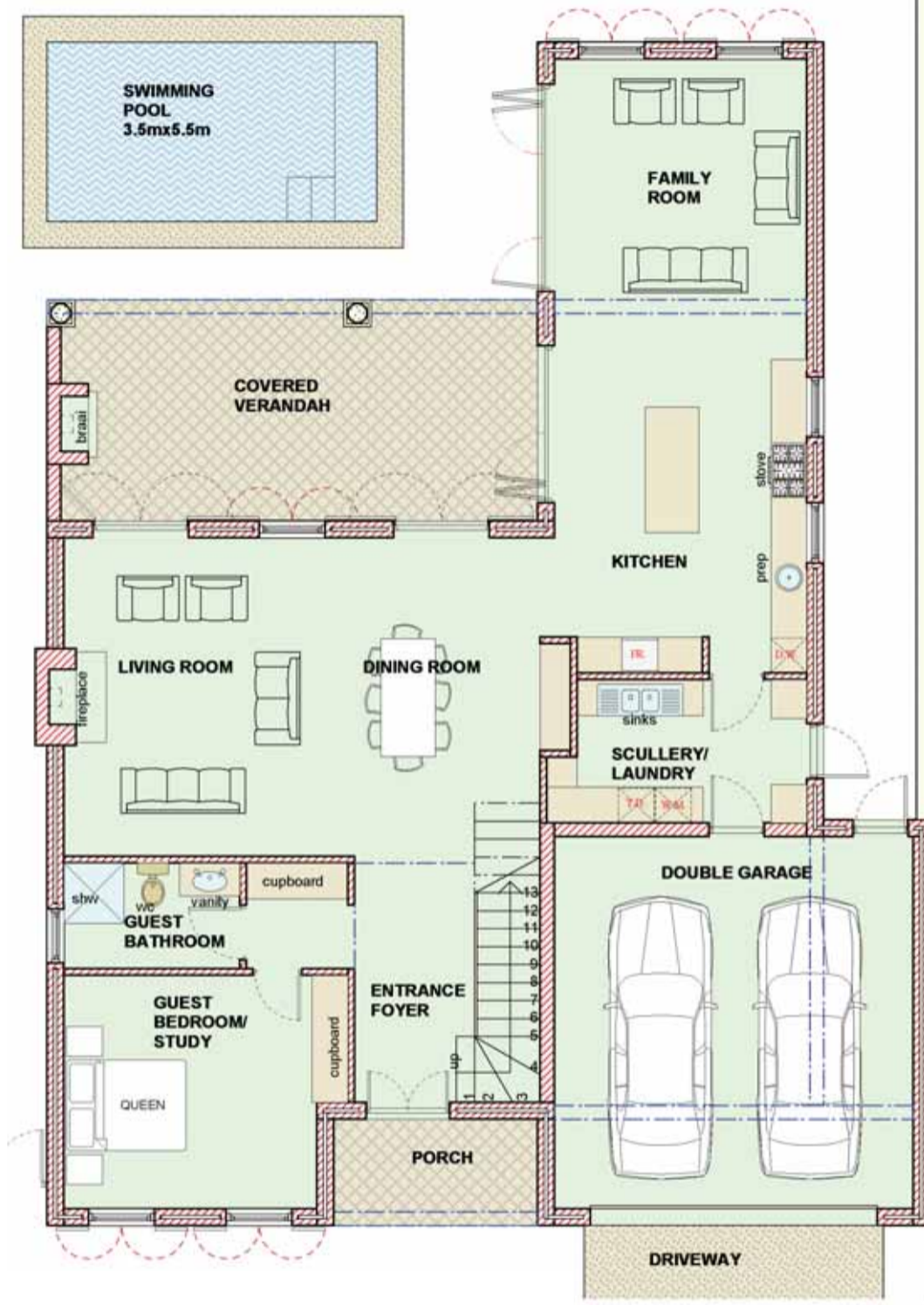


A GEORGIAN SECURITY
CLUSTER OF 4 UNITS CLOSE TO
HERSCHEL SCHOOL.

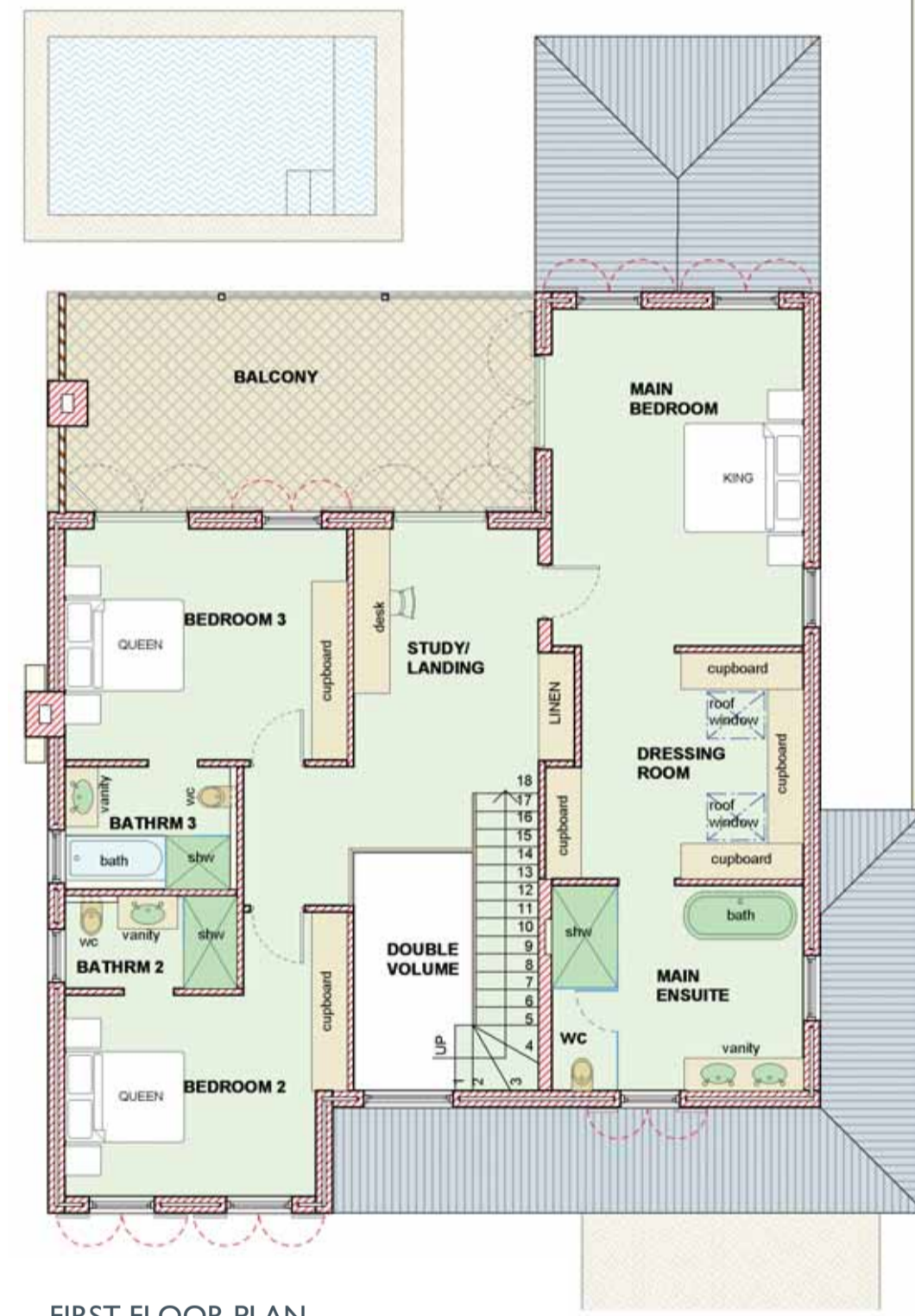
CLAREMONT UPPER



SLOANE TERRACE
HERSCHEL ROAD



GROUND FLOOR PLAN



FIRST FLOOR PLAN



FEATURES

- South entry North facing
- Offsite monitored security
- Upmarket finishes
- Pool options
- Open plan
- Fire places
- Lock-up-and-go
- 3 bedrooms, all en-suite
- Study / Guest suite / Staff quarter option
- Spacious master suite
- Flexible layout design & finishes
- Walk to Cavendish
- One home with 4 garaging option
- Double volume entrance halls
- Occupation from November 2011

