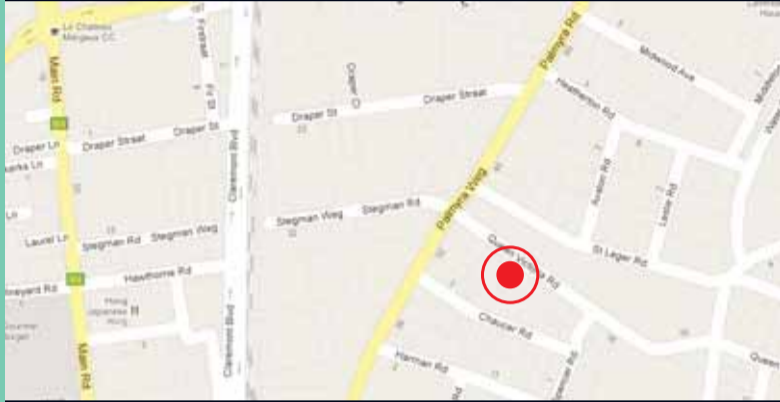




4 QUEEN VICTORIA ROAD
CLAREMONT



GPS CO-ORDINATES:
18° 28' 11.64" E 33° 58' 45.77" S



Mark Upton 082 890 2888
Tony Bredenkamp 083 602 6113
021 683 0008 www.upton.co.za



*Includes transfer duty
and bond registration fees

VICTORIA MEWS

4 QUEEN VICTORIA ROAD
CLAREMONT

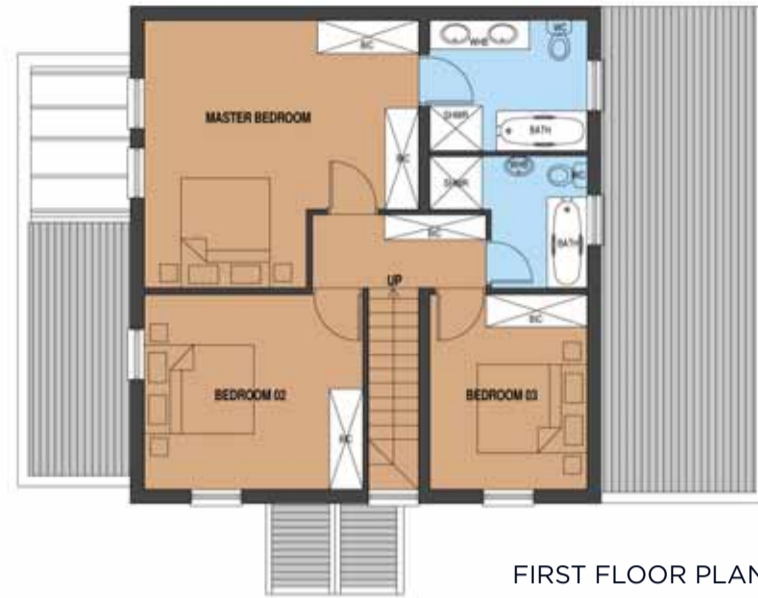
From R2,100,000 inc. VAT*



A MODERN SECURITY CLUSTER OF
4 ECO FRIENDLY / LOW ENERGY
HOMES CLOSE TO GOOD SCHOOLS

'Claremont - SA's hottest suburb'

Property Genie September 2011



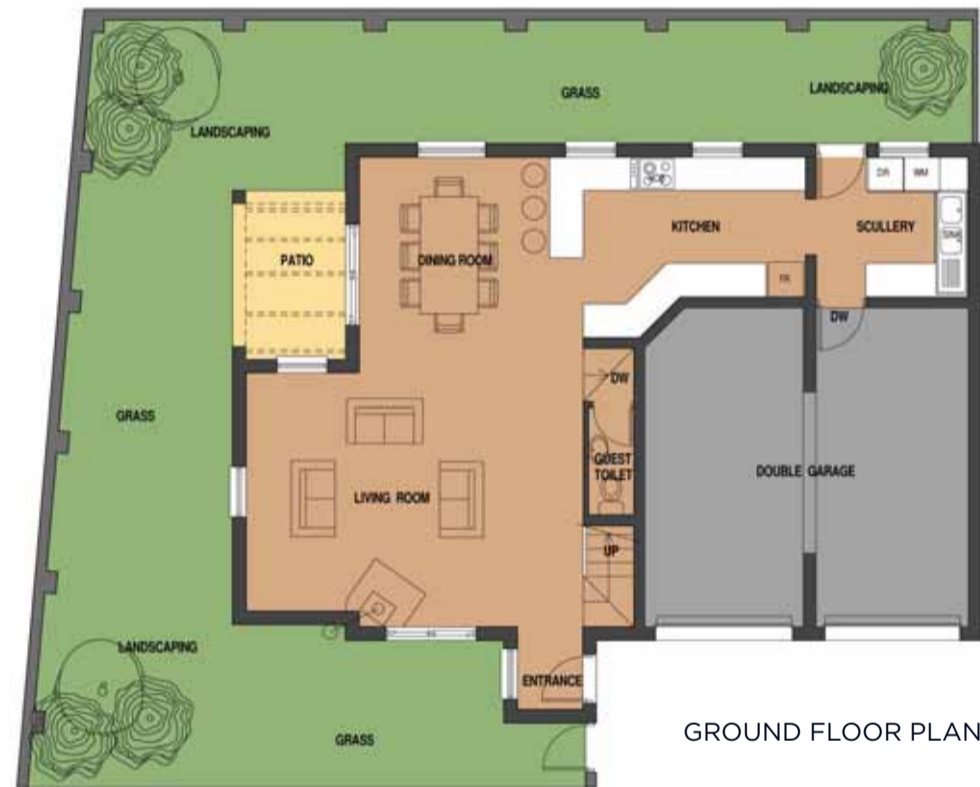
Palmyra Junction



Keurboom Park



Walk to Newlands cricket



Palmyra Junction

FEATURES

- Centrally located
- Choice of 4 quality eco / low energy homes
- Off-site monitored security
- Lock-up-and go
- Free standing energy saving Rondo fireplace
- Imported, euro standard, double glazed Ettenauer windows from Austria
- 3 bedrooms (M.E.S)
- 2 full bathrooms
- Open plan café quartz kitchen
- Separate scullery
- Guest cloakroom
- Solar geyser and insulated ceilings
- Anticipated occupation July / August 2012



Open plan living



Close to good schools